



# Steel on Ice Newsletter



Volume 24, Issue 1

Jan 2012

## Issue Highlights

Recent Events .....	3
Activities.....	4
NBS .....	4
Dues .....	6

## Stay in Touch

Are you getting our monthly meeting announcements and other club news? If not send an email to [news2soi@steelonice.com](mailto:news2soi@steelonice.com) include your name and phone number to help us update our contact list.



<http://www.facebook.com/groups/163540996930/>

**Steel on Ice,  
Inc.  
412-563-9864**



## Suggestion Box

**Question:** Why are we going back to Snowmass so soon?  
*[Response: Only a few resorts bid to host the NBS event. The Snowmass proposal (amenities & group pricing) made them a front runner.]*

Send suggestions to: [news2soi@steelonice.com](mailto:news2soi@steelonice.com)

## Meeting Schedule

- **Jan 28** – General Meeting/Ski Event - Boyce Park Area - details to be announced
- **Feb 11** – General Meeting/Ski Event - Hidden Valley Resort - details to be announced
- **Mar 10** – General Meeting – Conference Call - 6:30PM – Phone number to be issued by email
- **Apr 13** – General Meeting/Bowling Party - Forward Lanes
- **May 11** – General Meeting - location tbd - \*\*\*Elections\*\*\*
- **Jun 8** – General Meeting - location tbd



Schedule subject to change

## Youth Program

We are working on plans for the upcoming ski season. Since our fundraiser, the Golf Outing, was

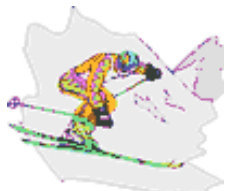
not held this year, youth activities will be limited. Unless additional funds are raised, we might only be able to have one ski event and sponsorship to youth will be limited. We need to know how many youth plan to participate so we can estimate how far our budget will stretch. If you have not done so, please get your youth dues submitted. If you have any suggestions, send them to Ron ([soi-youth@steelonice.com](mailto:soi-youth@steelonice.com)).



## Meeting Locations

Our meeting locations will change from month-to-month to provide diversity and to take advantage of free and low cost meeting venues. The location of our meetings will be announced by email, Evite, and in Facebook. Please be sure to RSVP so we hold the right amount of seating for our group. Also, be sure to send your current email address to: [news2soi@steelonice.com](mailto:news2soi@steelonice.com) to ensure the you get up to the minute announcements.





Newsletter input is due by  
3rd Monday of the month.  
Send your input to Teresa at:  
[news2soi@steelonice.com](mailto:news2soi@steelonice.com)



## Club Calendar

Skiing this year?  
Tell us where:

*Crested Butte, Sun  
Valley, Seven  
Springs, Snowshoe,  
Holiday Valley, other ???*

Upcoming events this year may include: annual dinner meeting, jazz in the park, and picnic. Send in your ideas: [news2soi@steelonice.com](mailto:news2soi@steelonice.com).



## Learn to Ski day— January 28

We are planning our Learn-to-Ski day at Boyce Ski Area on January 28th. Think snow! The plan is to have all participants be responsible for their lift ticket, rental, and lessons fees. Members will act as hosts, as well as provide encouragement, assistance, and bring light refreshments. We will need your help to make this event a success and to bring in new members. Please mark your calendars and plan to attend. Bring a friend!

**We would like members, participants, and volunteers to RSVP by January 21 so that we can**

**plan.**

Everyone will need to arrive by 9 AM and bring something to contribute to lunch. More details will be announced soon.

## Ski News

Skiers will discover new things at many regional resorts ... new concessionaire at Ski Denton; new restructuring at Wisp; new terrain at Seven Springs and Hidden Valley; new lifts at Holiday Valley, Kissing Bridge and Ski Sawmill; and new snow-grooming machines at Blue Knob, Snowshoe, Wisp, Holiday Valley and Kissing Bridge.

Read more: <http://www.post-gazette.com/pg/11317/1189041-287.stm>.

See local ski resort descriptions at: <http://www.post-gazette.com/pg/11317/1189053-287.stm>.

Cockaigne resort has been permanently closed after the main lodge was destroyed by fire in January and it was decided that rebuilding was unfeasible. Read more: <http://www.summitdaily.com/ARTICLE/20110502/NEWS/110509993/-1/RSS>.

## Club Dues

Club dues run from April 1 through March 31. Current 2011/12 members are:

*Ernie, Jack, Robin, Al, Debbie, Otis, Sheila, Billy, Dawn, Bob P., Wil, Don, Chelsey, Kathy, Rhonda, Theo, Marla, Carl, Teresa, Sharon*

If you have questions, contact Ernie ([soi-mem@steelonice.com](mailto:soi-mem@steelonice.com)). See Page 8 for more dues information.



### Mountain Retreat

Members who journeyed to the Mountain Pines RV Resort for a cookout at Ron's on July 9th had a blast! A peaceful mountain environment made for a much needed summer break. A day of R&R, abundant food, and lively conversation, was rounded out by cool evening breezes, live entertainment, and firework. Special thanks go to Elaine's fine cooking and Ron's manning of the grill. Everyone is already talking about going back next summer to try out the mini-golf.



Special thanks go to Elaine's fine cooking and Ron's manning of the grill. Everyone is already talking about going back next summer to try out the mini-golf.



### Card Party @ Theo's

Our Annual Card Party was held at Kathy & Theo's in November. It was great as usual. The seafood lasagna was outstanding. You know we have bid whist players, but did you know that we have a guitarist in the group? Our thanks go to Kathy and Theo for their outstanding hospitality.

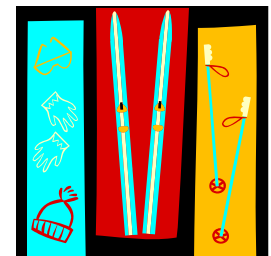
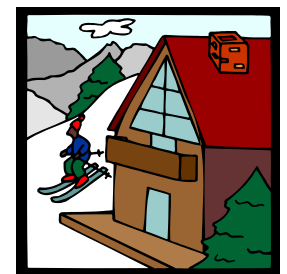
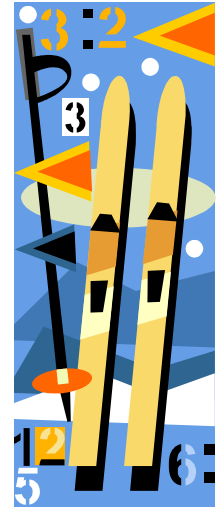


### Holiday Party at Rivers Casino

We held our annual Christmas Party at the Rivers Casino in December. We started the evening in the Grandview. The restaurant was crowded, but a member wrangled us a good table. The seafood buffet was hit. We checked out the live entertainment and tried our luck with the slots. Rumor has it the tables paid better than the machines. It was a fun way to launch the holiday season.

### Meeting @ Panera Bread

Our October meeting was held at Panera Bread in Oakland. It was well attended by some new and some familiar faces. We will keep an eye out for more convenient meeting venues. Ideas were kicked around for new activities. Do you Karaoke?





## NBS Events

- *Jan 12-16, NBS Western Region Winter Carnival, Whistler, BC*
- *Jan 26-29, NBS Eastern Region Winterfest 2012, Sugarbush, VT*
- *Feb 25-Mar 3, NBS AMCC (Mini-Summit) 2012, Sun Valley, ID*
- *March 21-25, NBS Midwest Winterfest, Copper Mountain, CO*
- *[NBS Springfest 2012](#), East Africa - Sojourn to the Serengeti, prices starting around \$5,760 ppdo, \$400 pp deposit due now.*

## Member Update

*Our friend Ron Brown, who was seriously injured at work in August, is recovering well at home. He is already talking about skiing next year. Get well wishes can be sent to:*

*George Ron Brown  
6419 Adelpia Ave  
Pittsburgh, PA 15206*

## Club Jackets

Anyone interested in new club jackets, please let us know: [news2soi@steelonice.com](mailto:news2soi@steelonice.com). We are moving ahead with getting an embroidery sample of the of our logo.

The jacket of interest is a blue anorak (over the hip) style jacket. The estimated cost of the new jacket is \$325, depending on the amount of embroidery. So far we have: RB, RE, AG, OK, EM, CS, CT, TMT, and TT. We will start collecting deposits soon.



## Club Events

### 2012

Jan 26-29: ER Winterfest, Sugarbush  
 Jan 28: Learn-to-ski, Boyce  
 Feb 2-5: Black Ski, Seven Springs  
 Feb 11: Family & Friends, Hidden Valley  
 Feb 25-Mar 3: NBS MiniSummit, Sun Valley, ID  
 Mar 10: Race Day, Seven Springs  
 Mar 24: Road Trip ???  
 April 13: Bowling Meeting  
 May 13: Race for the Cure  
 June 1-3: Capital Jazz Fest  
 July 13: Dinner Meeting  
 Aug 11: Family & Friend Picnic  
 Aug 10 – 12: Caribana  
 TBD: ER Summerfest  
 TBD: Camping/Whitewater Rafting  
 TBD: Happy Hour

TBD: 17<sup>th</sup> Annual Golf Outing  
 TBD: Horseback Riding  
 Oct ?: Bike – Moraine State Park  
 Oct ?: Bowling  
 Nov ?: House Party  
 TBD: Island Sport Center  
 Dec 8: Christmas Party

### 2013

Feb 23—Mar 2: NBS Summit—Snowmass, CO

[\[click here for calendar\]](#)

*Events are subject to change.*

## Community Events

- **Martin Luther King Jr. Leadership & Diversity Awards**, Heinz Field, **1/13/2012**, An exciting and inspiring evening recognizing outstanding individuals and organizations who are leading by example --- and working to transform our region for the better. Named in honor of civil rights leader Martin Luther King Jr (1929-1968) guests will enjoy cocktails and hors d'oeuvres in the beautiful East Club Lounge while mingling with a broad cross-section of Pittsburgh's movers and shakers.

Proceeds benefit Coro Pittsburgh, whose mission is to advance ethical and effective leaders who are committed to civic engagement. For more information, call Kelsey Halling at (412) 208-0251.

- **International Guitar Night**, Manchester Craftsmen's Guild Jazz Concert Hall, **Jan 20, 2012**, The world's foremost acoustic guitarists (Brian Gore, Adrian Legg, Lulo Reinhardt, Marco Pereira, Joe Negri) perform their latest original compositions and exchange musical ideas live on the MCG stage.
- **Sunday Night Jazz**, James Street Gastropub & Speakeasy, **1/22/2012** 6pm, The Pittsburgh Jazz Society (PJS) proudly presents this regular program highlighting local jazz artists. The Pittsburgh Jazz Society is a non profit all volunteer organization, that is dedicated to the promotion, preservation and perpetuation of jazz. This is accomplished through education, performance, partnering and community outreach for members and the general public. For more information, call (412) 904-3335.
- **Dave Koz & Pittsburgh Symphony Pops Orchestra**, Heinz Hall, **1/26/2012 through 1/29/2012**, Grammy-nominated saxophonist Dave Koz joins Marvin Hamlisch and the Pittsburgh Symphony Pops Orchestra in a concert featuring memorable songs from the silver

screen. For show times and tickets, call (412) 392-4900.

- **Sean Jones** Presents, August Wilson Center For African American Culture, **1/26/2012** 7pm, Acclaimed local trombonist Sean Jones hosts this program pairing distinct jazz artists in a unique display of talent and collaboration in one of music's purest forms: the duet. For more information, call (412) 338-8742.
- **The Roger Humphries Jazz Jam Session**, CJ's In The Strip, **2/2/2012** 8pm, One of Pittsburgh's most popular drummers, Roger Humphries is joined by his band RH Factor to perform classic jazz tunes. Look for surprise guest as the session is open to all musicians and often highlights both local and national jazz artists. Admission is free to this concert for the mature adult crowd. No tennis shoes please. For more information, call (412) 642-2377.
- **George Clinton & The Parliament Funkadelic**, Stage AE, **2/17/2012** 7pm, Synonymous with funk, George Clinton and his band perform some of their biggest hits including "The Mothership Connection," "Aquaboogie" among others that combine acid rock with primal funk. Tickets are available from TicketNetwork.
- **Michael Jackson THE IMMORTAL** World Tour by Cirque du Soleil, **4/13** 8:00p, Petersen Events Center.





**STEEL  
ON  
ICE  
INC.**

Steel on Ice, Inc.  
P.O. Box 99652  
Pittsburgh, PA 15233

412-563-9864  
news2soi@steelonice.com

We're on the Web!  
www.steelonice.com



Founded: 1988

Member NBS: 1989



**Officers:**

Teresa Miller Tucker, President.....	412-242-9868
Ron Brown, Vice President.....	412-661-4726
Ernest Anderson, Financial Secretary.....	412-787-8879
Sharon Washington Recording Secretary.....	412-331-6336
Chelsey Sirmons, Treasurer.....	412-244-4700
Marla Rollins, Corresponding Secretary.....	412-244-0244
Theo Towns, Reserve Officer.....	412-260-6053

**Committee Chairpersons:**

Ron, Youth Committee.....	412-661-4726
Ernest Anderson, Membership.....	412-787-8879
Billy Jackson, Safety.....	412-362-9944
Theo Towns, Racing.....	412-260-6053
Teresa Miller Tucker, Activities.....	412-242-9868
Theo Towns, Parliamentarian.....	412-260-6053
Sharon Washington, Historian.....	412-331-6336
Rodney Jones, Golf Outing.....	412-788-2699
Teresa Miller Tucker, Webmaster.....	412-242-9868
Marla Rollins, Hotline.....	412-244-0244

**Steel on Ice Dues**

**Adult Membership (April-March): \$45.00**  
*Consecutive Prompt Adult Renewal (April-June): \$35.00*  
**Family Membership (April-March): \$95.00**  
*Consecutive Prompt Family Renewal (April-June): \$75.00*  
**Associate Membership (April-March): \$35.00**  
*Consecutive Prompt Associate Renewal (April-June): \$25.00*  
**Associate Family Membership (April-March): \$75.00**  
*Consecutive Prompt Associate Family Renewal (April-June): \$55.00*  
**Youth Membership (April-September): \$10.00**  
*Late Youth Membership (October-March): \$20.00*  
 Members outside the continental USA: +\$10.00

Annual dues run from April through March.

Consecutive: Member who paid dues during the previous year. This year only, anyone who has ever paid dues before can pay at the consecutive renewal rate until the end of June.

Associate: Member residing 50 miles or more outside of the city of Pittsburgh.

For membership applications and/or information, please call Steel on Ice Membership Chairperson, Ernest Anderson at 412-787-8879 or call the Steel on Ice Hotline at 412-563-9864. Make checks payable to: 'Steel on Ice' and mail to P.O. Box 99652, Pittsburgh, PA 15233.

