

Friend and Family Ski Day

Hidden Valley Four Seasons Resort

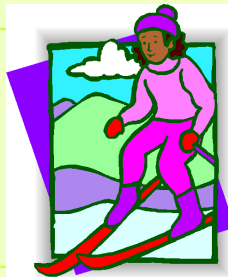
February 13, 2010

See you skiing!!!

	Regular Price	Group Price (15 or more arriving @ 9:30AM) Please bring exact change to participate in the group
Adults (Ages 18 and older), Membership not required	\$47 - Lift Ticket \$23 - Ski Rental \$24 - Lesson	\$30 - Lift Ticket \$18 - Ski Rental \$15 - Lesson
Youth (Ages 7 to 17), Member	\$0 - Lift Ticket \$23 - Ski Rental \$0 - Lesson	\$0 - Lift Ticket \$18 - Ski Rental \$0 - Lesson
Youth (Ages 7 to 17), NonMember	\$37 - Lift Ticket \$23 - Ski Rental \$24 - Lesson	\$30 - Lift Ticket \$18 - Ski Rental \$15 - Lesson

Vertical Drop: 610 ft
 Longest Run: 1.00 mi
 Skiable Area: 388 acres
 Snow Making: 388 acres

Dist. from Pgh = 57mi



Number of Lifts: 8
 Number of Trails: 28
 Beginner: 24%
 Intermediate: 46%
 Advanced: 30%

Click here for [Trail map](#)

Important Fine Print!

1. Current youth members receive complementary lift ticket & group lesson.
2. **Youth members must RSVP by noon Feb. 8th to be eligible. Call Billy at (412) 481-8858.**
3. **Youth members must arrive at 9:30AM on day of event to be eligible.**
4. Family & friends meet at 9:30AM in the Alpine Room (2nd floor). Those who do not arrive by 9:30AM must make their own arrangements.
5. Lift Tickets expire at 6PM.
6. Lessons begin between 10:30-11AM, if you miss it, the next session is at 2PM; lessons are 90 min.
7. Quick bites to burgers, sandwiches, pizza, etc. are available at the Resorts. You are permitted to bring your own picnic lunch to the Alipne Room. Note, electrical appliances such as crockpots are no longer permitted.



Pricing and details subject to change

More notes:

- We need everyone to arrive by 9:30AM to that we can confirm that we qualify for the group discounts. We will meeting in the Alpine Room (2nd floor). If the Alpine Room is full, we will be relocate to the Southridge Room (near the cafeteria).
- **We will collect payment of fees not covered by the club (ski rental, adult & non-member lessons, adult & non-member lift tickets). In order to take advantage of the group discounts, these fees must be paid in cash. Please bring correct change. Please be patient while we take care of logistics!**
- If 15 or more skiers are present, the group coordinator will then purchase lift tickets, group lesson vouchers, and rental vouchers through special arrangement with the Resort.
- If we do not have 15 participants, we will purchase youth members lift tickets and lesson vouchers only. Everyone else will have to purchase their full price lift and lessons individually. Everyone (adult & youth) will have to purchase their full price rental individually, as well.
- When renting skis, you must provide the rental shop with your height, weight, shoe size, and skiing ability for them to select the appropriate equipment. You are required to leave your drivers license as ID to ensure that you will return them. Only 1 drivers license is required per family.
- Please dress appropriately for the conditions. See our flyer at: <http://steelonice.com/forms/What to Wear.pdf> for suggestions as to what to wear. Weather forecast available at: http://www.weather.com/outlook/recreation/ski/weather/tenday/814005?from=search_vert
- For more information on club membership and activities, see our information at: <http://www.steelonice.com/>
- For more information on youth membership and activities, see our information at: <http://www.steelonice.com/youth.html>. Youth members, please bring completed and signed waivers.

Directions (from Pgh): take the PA Turnpike to Exit 110(Somerset)(old exit #10), then Route 31 west for 10 miles to Hidden Valley Resort

Steel on Ice, Inc.

Steel on Ice, Inc. Phone: 412-572-4527
 P.O. Box 99652 Email: events1@steelonice.com
 Pittsburgh, PA 15222 www.steelonice.com



Pricing and details subject to change