

It's a Vibe, NBS in Big Sky!

NBS BLACK SUMMIT 2024



FEBRUARY 24 – MARCH 4, 2024

TRIP LEADER INFORMATION GUIDE

DESTINATION: BIG SKY, MT



Big Sky Resort Lodging

Lodging rates include 22.8% taxes and service fees which are subject to change depending on Federal, State, local laws and resort policy.

The Big Sky comp policy is one (1) complimentary room for every thirty (30) paid rooms, per night, (non-cumulative) over the event dates.

Porterage is \$15 per person and includes luggage handling for arrival and departure. Self parking is complimentary. Covered and Valet parking is available for a nightly rate per vehicle at the Summit and The Huntley Lodge and is subject to garage limits.

The Huntley Lodge



The Huntley Lodge is a premier choice for guests seeking clean, comfortable and convenient accommodations at a value. This slope-side, three-story classic ski lodge offers a pool and hot tub, fitness center, Chet's Restaurant and Mountain Mocha coffee shop, and is steps from the Yellowstone Conference Center and the Explorer ski lift. Daily breakfast buffet served from 6:30 am to 10:30 am. Free internet, free area shuttle, free self-parking, ski storage, babysitting/childcare – extra charge.

Unit Type/Bedding	# of Units	Max # of Occupants	Total Cost /Person	Cost/night	Total cost w/taxes & fees
2 Queen	13	2	\$2,119.00	\$606.00	\$4,237.00
2 Queen/Mtn View	40	2	\$2,182.00	\$623.00	\$4,363.00
2 Queen – Loft Queen/Twin	8	3	\$1,632.00	\$699.00	\$4,896.00

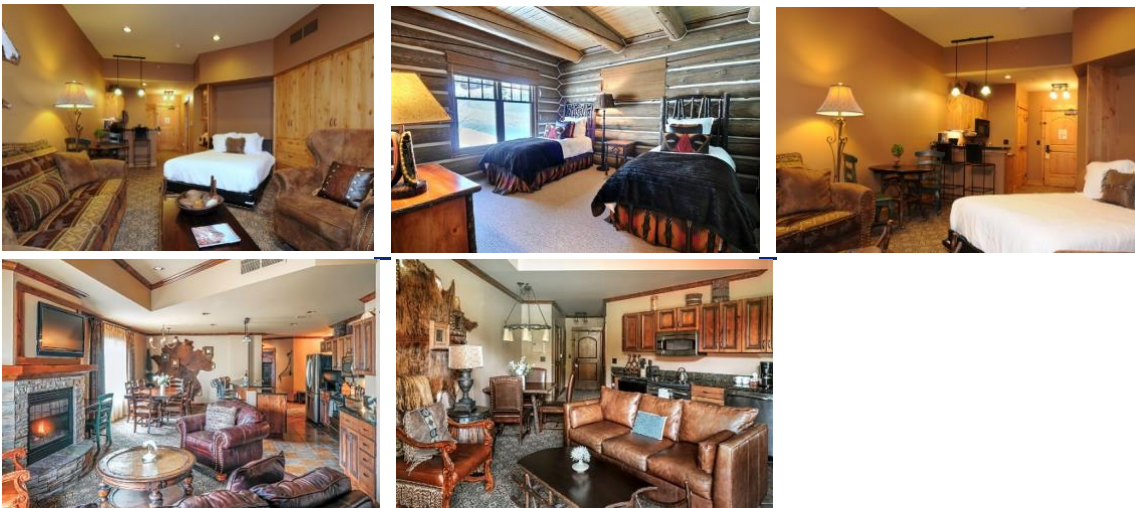
Shoshone Condominiums



The Shoshone Condominium Hotel combines the comforts of a private condominium with the benefits of hotel services and amenities. Each unit features full kitchens, living areas, and balconies. This property is steps from the Yellowstone Conference Center. Daily breakfast buffet served from 6:30 am to 10:30 am. Free Wi-Fi, free parking.

Unit Type	# of Units	Bedding	Max # of Occupants	Total Cost/ person	Total Cost/ night	Total cost w/taxes & fees
1 Bedroom	33	K or Q	2	\$2,955.00	\$844.00	\$5,910.00
1 Bedroom/Loft	4	K or Q, Q	3	\$2,220.00	\$951.00	\$6,660.00

Village Center



The Village Center units are ski-in, ski-out. These units feature fine finishes, designer décor, HDTV and nightly turndown service. Guests have access to a private slope-side pool and hot tub. Daily breakfast buffet served from 6:30 am to 10:30 am.

Unit Type	# of Units	Bedding	Max # of Occupants	Total Cost /Person	Total Cost /night	Total cost w/taxes & fees
1 Bedroom	3	K or Q	2	\$2,710.00	\$774.00	\$5,420.00

3 Bedroom	1	K, Q, Q	4	\$2,786.00	\$1,591.00	\$11,141.00
Studio/Slopeside	5	Q	2	\$2,289.00	\$654.00	\$4,578.00
Studio	21	Q	2	\$2,246.00	\$641.00	\$4,492.00

Big Horn Condominiums



The Big Horn condominiums are truly a home away from home. These spacious condominiums are especially comfortable for groups, with full kitchens, living and dining areas, fireplaces, laundry facilities, and a private garage. Views of Lake Levinsky and Lone Mountain pair splendidly with a location just ¼ mile from the Mountain Village. In the winter months, guests can access ski terrain just across the street via the Bear Back Poma lift. Free Wi-fi, free parking, bell and transportation services.

Unit Type	# of Units	Bedding	Max # of Occupants	Total Cost/ Person	Total Cost/ night	Total cost w/taxes & fees
3 Bedroom condo	2	K, Q, 2 twins or Bunk Beds	5	\$994.00	\$709.00	\$4,966.00

Stillwater Condominiums



Affordable and conveniently located to the center of Mountain Village, the Stillwater Condos offer standard amenities for price-conscious travelers. Most units offer full kitchens and gas or wood fireplaces, and laundry facilities are located in each building.

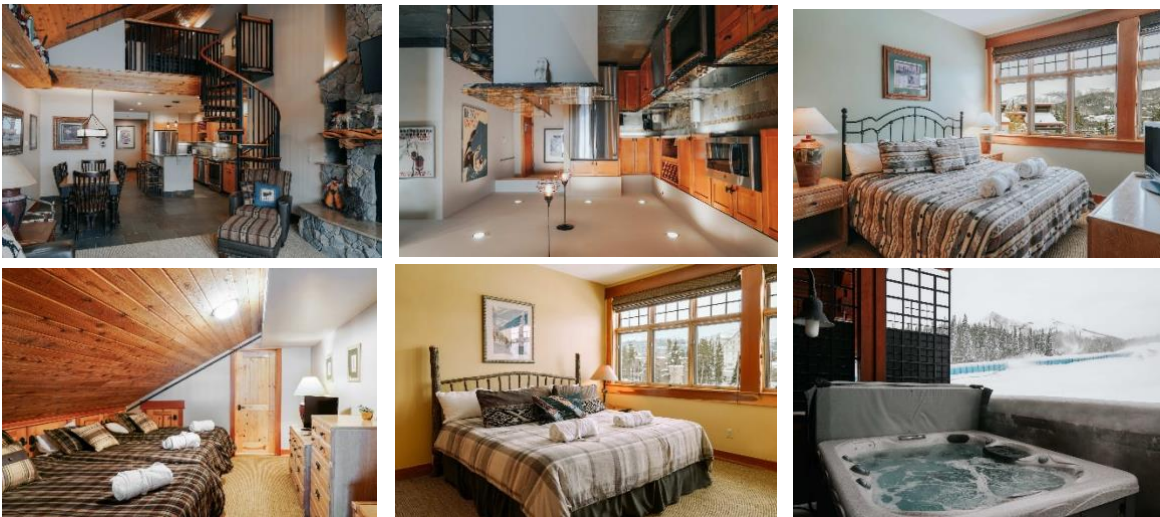
Unit Type	# of Units	Bedding	Max # of Occupant	Total Cost/Person	Total Cost /night	Total cost w/taxes/fees
1 Bedroom	5	K or Q	2	\$1,558.00	\$445.00	\$3,116.00
1 Bedroom/Loft	6	K or Q, Loft Q or 2 Twins	4	\$896.00	\$511.00	\$3,581.00
2 Bedroom	1	K or Q, Q or 2 Twins	4	\$896.00	\$511.00	\$3,581.00

Snowcrest

Snowcrest #8512:



Snowcrest #8514:



Snowcrest #8515



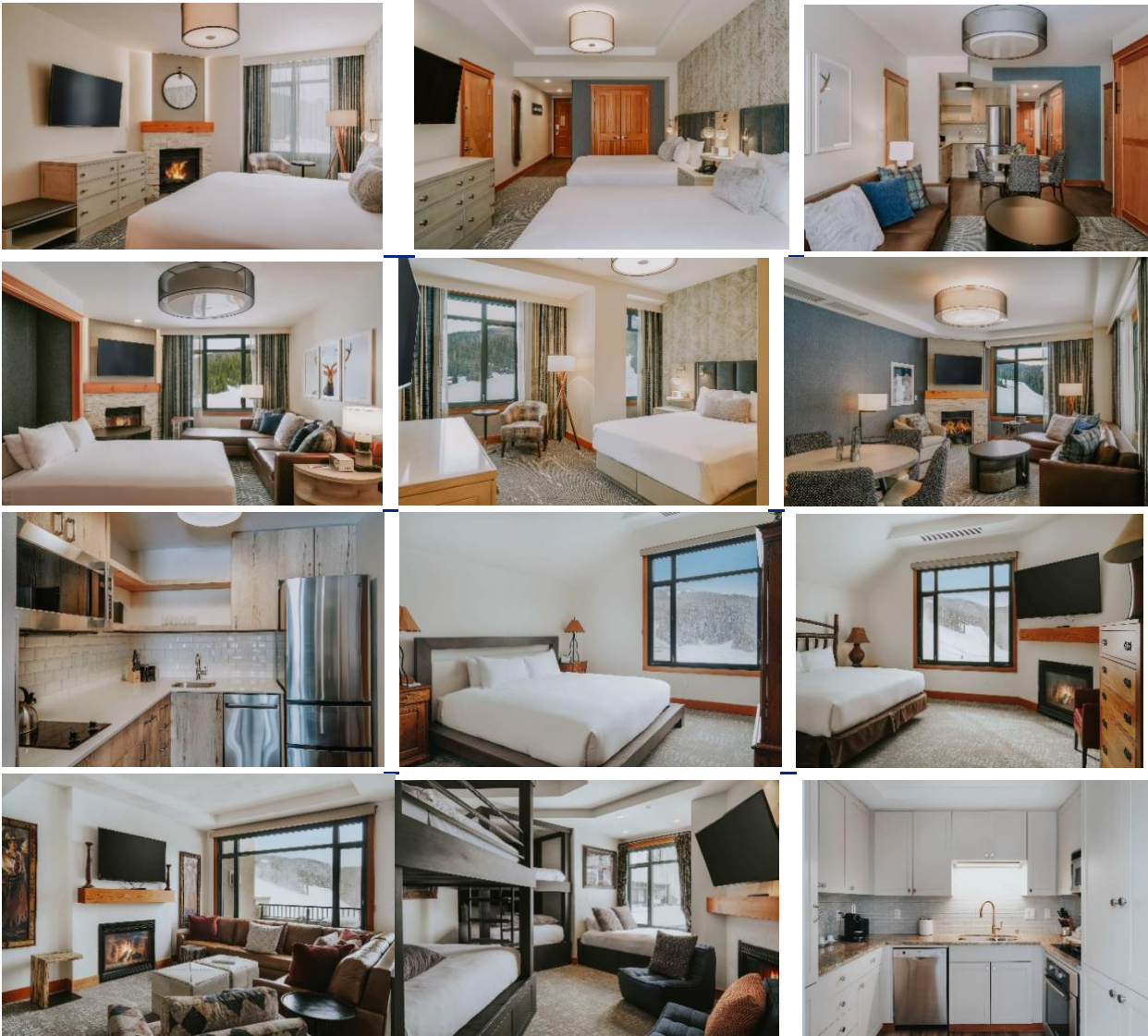
Located steps from the lifts. Full kitchens, Free Wi-fi, free parking, Bell and transportation services.

Unit Type	# of Units	Bedding	Max # of Occupants	Total Cost/ person	Total Cost/night	Total cost w/taxes & fees
2 Bedroom/Loft #8512	1	K, Q, Loft Q+2 Twin Bunks	8	\$1,361.00	\$1,441.00	\$10,088.00
2 Bedroom/Loft #8514	1	K, K, loft Q + 2 twins	7	\$1,058.00	\$1,058.00	\$7,406.00

2 Bedroom/Loft #8515	1	K, Q + 2 twins, Loft 3 twins	8	\$1,361.00	\$1,441.00	\$10,088.00
-------------------------------------	----------	---	----------	-------------------	-------------------	--------------------

Summit Hotel

Slope side, ski in and ski out, central village, parking, two restaurants, on site, swimming pool, exercise facilities. Some units with kitchens.



This ski-in, ski-out property features spacious rooms and suites with high quality furniture and fixtures, HDTV, nightly turndown service and complimentary ski valet. Guests may enjoy a fitness center with an outdoor heated pool and hot tub, steam room, dine at Peaks restaurant and Carabiner Lounge and shop at Provisions, a high fashion boutique.

Unit Type	# of Units	Bedding	Max # of Occupants	Total Cost/ person	Total Cost/ night	Total cost w/taxes & fees
1 Bedroom	19	K or Q	2	\$5,040.00	\$1,439.00	\$10,079.00
1 Bedroom w/hot tub	2	K or Q	2	\$3,836.00	\$1,096.00	\$7,672.00
King Hotel Room	12	K	2	\$3,836.00	\$1,096.00	\$7,672.00
Mobility Access	4	K	2	\$3,753.00	\$1,072.00	\$7,506.00
2 Queen Hotel Room	68	2 Q	2	\$3,793.00	\$1,083.00	\$7,586.00
Queen Studio	46	Q	2	\$3,536.00	\$1,010.00	\$7,071.00
3 Bedroom Penthouse #1002	1	K, K, Q, Murphy bed in LR	5	\$6,685.00	\$4,774.00	\$33,423.00
3 Bedroom Penthouse #1005	1	K, K, 2 Q bunks, full daybed	9	\$3,721.00	\$4,783.00	\$33,483.00

Cowboy Heaven 2 Bedroom/2 Bath Cabin



Rustic décor, private hot tub, slope side. The Wild West Cabin has 2 bedrooms and 2 full bathrooms. Bedroom 1 has a queen bed, flat screen TV, and adjacent bathroom with tub/shower. Bedroom 2 has 2 twin beds, private bath, and flat screen TV. There is a gas fireplace (stove) and large flat screen TV in living room. The full kitchen opens to the dining area and living room and is fully equipped with stainless steel fridge and all pots, pans, and cooking needs. There is parking directly next to the cabin for our guests only. .

Unit Type	# of Units	Bedding	Max # of Occupants	Total cost/ person	Total Cost/ night	Total cost w/taxes & fees
2 Bedroom	2	K or Q, 2 twins	4	\$1,389.00	\$793.00	\$5,555.00

Half Hitch 5 Bedroom Home



Ski-in /ski-out to both Moonlight Basin and Big Sky Resort from this magnificent chalet, located in the exclusive Diamond Hitch area of Moonlight Basin Ranch. Half Hitch

Home was featured in Log Home Living Magazine and is decorated in a western-style theme. The three-level Half Hitch Home includes 5 bedrooms, 6 bathrooms, 2 full kitchens, 3 living rooms, a media room with seating for 8, an exercise room, and a game room. The Half Hitch Home is located between the Challenger and Iron Horse ski lifts. Guests have access to the facilities at Big Sky's Huntley Lodge. slope side, near base of Challenger Lift.

Unit Type	# of Units	Bedding	Max # of Occupants	Total Cost/ person	Total Cost/ night	Total cost w/taxes & fees
5 Bedroom	1	K, Q, Q w/twin in Loft, 4 twins, K, Q sofa sleeper	11	\$2,039.00	\$3,302.00	\$22,421.00

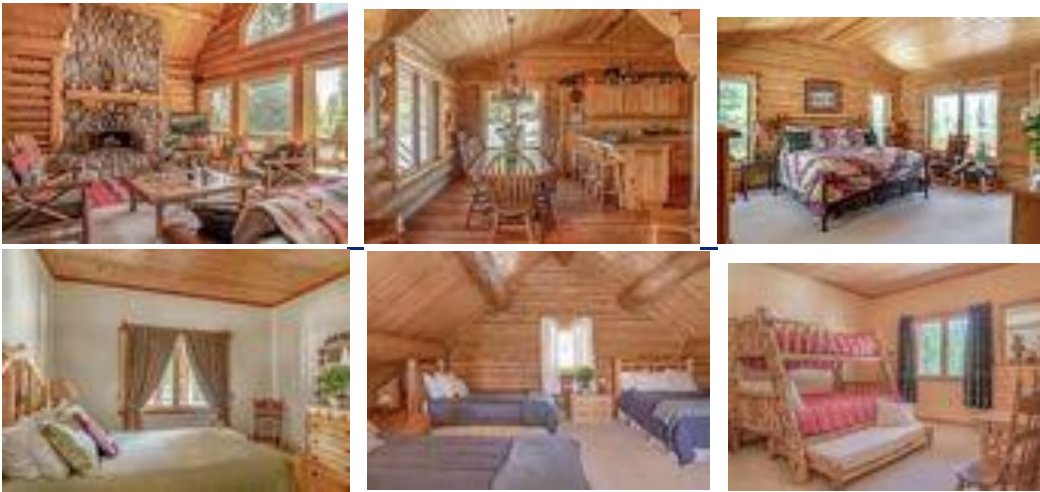
Saddle Ridge 3 Bedroom



Saddle Ridge Family Retreat is the perfect Big Sky ski-in/ski-out condo! This well appointed 3 bedroom condo is awaiting you for your next Big Sky Escape! Located within the Moonlight base area is the Saddle Ridge ski-in/ski-out condo complex and it is the perfect blend of convenience and value. After a day of adventure you can relax in the private hot tub and take in the amazing views of Big Sky Resort. Easy access to Pony Express chair lift. Private vehicles recommended.

Unit Type	# of Units	Bedding	Max # of Occupants	Total Cost/ Person	Total Cost/ night	Total cost w/taxes & fees
3 Bedroom	1	K or Q, Q or 2 twins	5	\$1,234.00	\$877.00	\$6,175.00

White Grass 4 Bedroom/Loft 3Bath house w/hottub



The White Grass Home is a beautiful log home located in the Cascade Highlands subdivision of Big Sky, between the Mountain Village and Moonlight Basin Ranch. A private outdoor hot tub and beautiful views of the ski runs. Lone Peak and the Mountain Village are just a few of the luxuries this home has to offer. The White Grass Home has four bedrooms plus a loft and 3 bathrooms. This property offers ski out access to Big Sky Resort and is a short drive to the lifts at Moonlight Basin. Guests have access to the facilities at Big Sky's Huntley Lodge.

Unit Type	# of Units	Bedding	Max # of Occupants	Total Cost / person	Total Cost/ night	Total cost w/taxes & fees
4 Bedroom Loft	1	K, Q, 2Q, 3 bunk, loft Q & 2 twins	11	\$1,187.00	\$1,864.00	\$13,051.00

Wilson Hotel - Residence Inn by Marriott

145 Town Center Avenue, Big Sky, Montana

Lodging rates include 12% in taxes.

The Comp policy for The Wilson Hotel is one (1) per forty (40) comp rooms if the block fills 100%.



Unit Type	# of Units		Max # of Occupants	Total Cost/ Person	Total Cost/ night	Total cost w/taxes & fees	
Studio King Hotel Room	20		2	\$2,314.00	\$661.00	\$4,627.00	
Studio 2 Queen Hotel Room	30		4	\$1,236.00	\$706.00	\$4,942.00	
1 Bedroom Suite	10		2	\$2,433.00	\$695.00	\$4,865.00	
1 bedroom suite w/balcony	10		2	\$2,510.00	\$717.00	\$5,019.00	

Location With a stay at Residence Inn by Marriott Big Sky/The Wilson Hotel, you'll be centrally located in Big Sky, steps from Gallatin National Forest and within a 5-minute walk of Big Sky Town Center. This family-friendly hotel is 0.5 mi (0.8 km) from Big Sky Medical Center and 1.6 mi (2.5 km) from Big Sky Golf Course.

Rooms Make yourself at home in one of the 70 guestrooms, featuring kitchens with refrigerators and stovetops. LCD televisions with cable programming provide entertainment, while complimentary wireless Internet access keeps you connected. Conveniences include phones, as well as desks and microwaves.

Amenities After a day on the slopes, enjoy recreational amenities including an outdoor pool and a spa tub. Additional amenities at this hotel include complimentary wireless Internet access, concierge services, and an arcade/game room. The complimentary ski shuttle makes getting to the slopes a breeze.

The Lodge At Big Sky

75 Sitting Bull Road, Big Sky Montana



The Lodge at Big Sky offers complimentary breakfast in the morning, free Wi-fi, and shuttle service to the base area.

The Lodge at Big Sky is within a 5-minute walk to the Explorer Ski Lift, a 6-minute walk to the Ramcharger Express Lift, and a 8-minute walk to the Black Bear Ski Lift. All rooms come equipped with a microwave, mini fridge, coffee/tea maker, a wet bar. The kitchenette units also have a cook top.

The property has an indoor pool, hot tubs, a gym, laundry facilities, and ski storage. Self parking is available for \$12 per day.

Taxes of 19% are included in the rates.

Also, please note that The Lodge is a cashless property.

Unit Type	# of Units	Max # of Occupants	Total Cost person	Total Cost/night	Total cost w/taxes & fees
Valley View – 2 Queens	27	4	\$1,248.00	\$713.00	\$4,991.00
Valley View – King	13	2	\$2,496.00	\$713.00	\$4,991.00
Mtn View – 2 Queens	18	4	\$1,311.00	\$749.00	\$5,243.00
Mtn View – King Suite	5	2	\$2,622.00	\$749.00	\$5,243.00
Mtn View – 2 Queen Suite w/Kitchenette	10	4	\$1,374.00	\$785.00	\$5,495.00
Master Suite – King	13	2	\$2,496.00	\$713.00	\$4,991.00
Mtn View – 3 Queens	6	3	\$1,832.00	\$785.00	\$5,495.00